

ARITCO HOMELIFT SPECIFICATIONS



1300 122 868



sales@axislifts.com.au

Aritco HomeLift

TOP FLOOR SOLUTIONS

LIFT COLOUR

DESIGNLIGHT

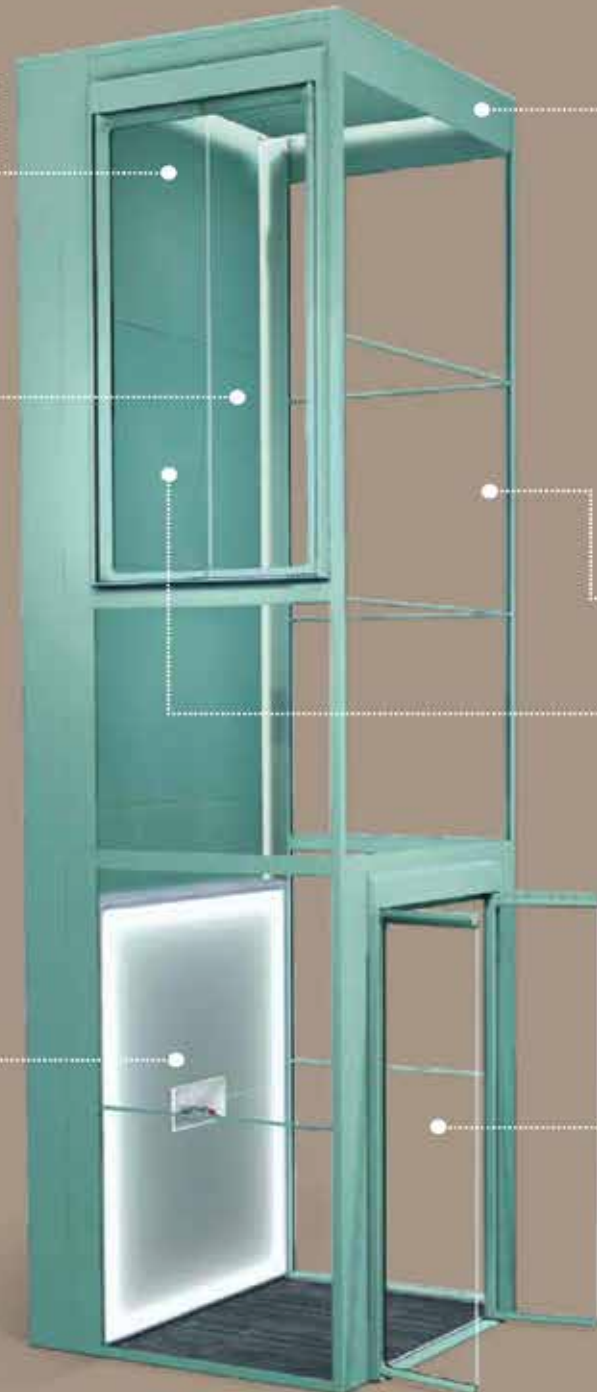
LIFT WALLS

CARRIER AND CONTROL PANEL

The carrier consists of the L-shaped platform and a DesignWall that moves up and down when you travel in the lift. The lift is controlled from the control panel in the middle of the DesignWall. By turning and pushing the unique SmartControl on the control panel, you choose the floor and start the journey.

DOORS

Doors are installed in the lift walls on each floor. The doors are double doors, i.e. two leaves with a central opening. The door leaves are made of glass with painted profiles.



ARITCO HOMELIFT SPECIFICATIONS



1300 122 868



sales@axislifts.com.au

TECHNICAL DATA

DRIVE SYSTEM	SCREW & NUT
RATED LOAD	S5 - 250 KGS (2 PERSON) S8 - 250 KGS (3 PERSON) S9 - 250 KGS (3 PERSON) S12 - 400 KGS (5 PERSON) S15 - 400 KGS (5 PERSON)
COMPLIANCE	EN 81 - 84
NUMBER OF FLOORS	2 TO 6 FLOORS
TRAVEL HEIGHT	250 - 1500 mm
TRAVEL SPEED	0.15m/s MAX 0.30m/s MAX
CONTROL PANEL	HOLD TO RUN
ENVIRONMENT	INDOOR

PLEASE CONTACT OUR FRIENDLY SALES TEAM FOR MORE DETAILS

ARITCO HOMELIFT SPECIFICATIONS



1300 122 868



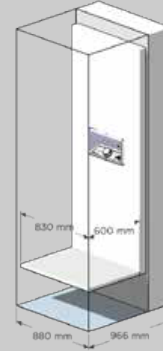
sales@axislifts.com.au

The Aritco HomeLift is available in five different sizes:
S5, S8, S9, S12 and S15.

Sizes S5, S8 and S9 all have slim design walls, which makes these sizes ideal when the space is limited in the house.

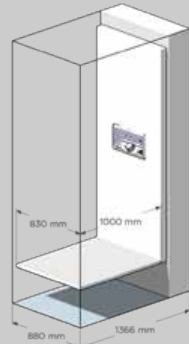
Should you have a little extra space to play with, the larger sizes S12 and S15 are perfect for bringing larger things with you in the lift.

Carrier size: Inner dimensions of the lift
Wall size: Outer dimensions of the lift



S5

Carrier size: 600 x 830 mm **Wall size:** 966 x 880 mm
Rated load: 250 kg / 2 persons



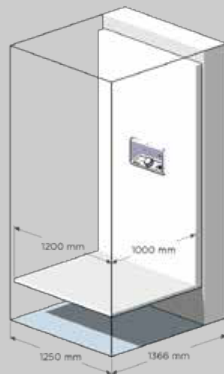
S8

Carrier size: 1000 x 830 mm **Wall size:** 1366 x 880 mm
Rated load: 250 kg / 3 persons



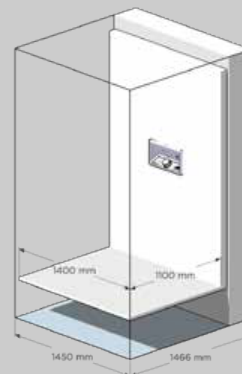
S9

Carrier size: 1100 x 830 mm **Wall size:** 1466 x 880 mm
Rated load: 250 kg / 3 persons



S12

Carrier size: 1000 x 1200 mm **Wall size:** 1366 x 1250 mm
Rated load: 400 kg / 5 persons



S15

Carrier size: 1100 x 1400 mm **Wall size:** 1466 x 1450 mm
Rated load: 400 kg / 5 persons

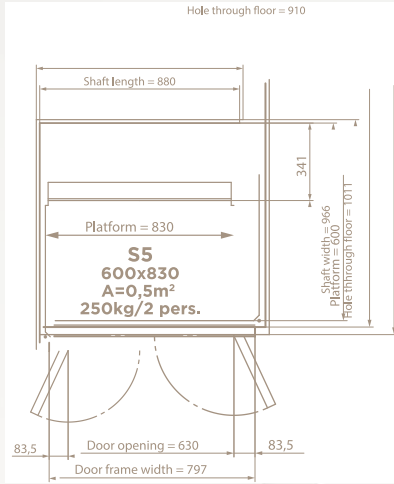
ARITCO HOMELIFT SPECIFICATIONS

☎ 1300 122 868

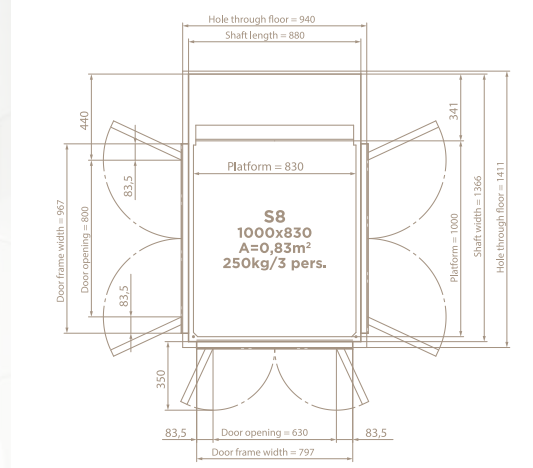
✉ sales@axislifts.com.au

DRAWINGS

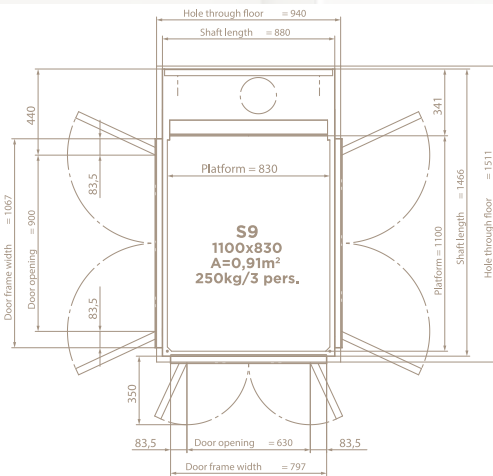
S5



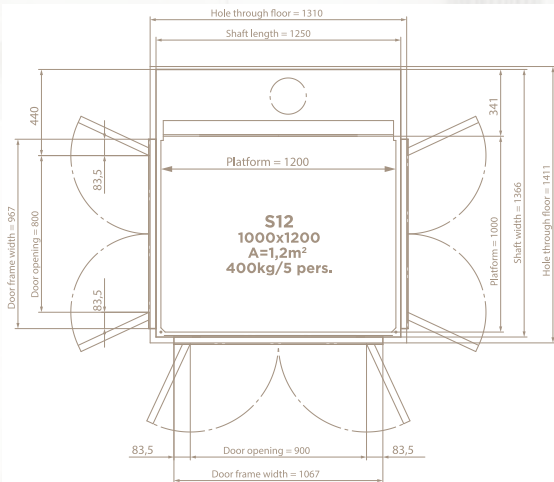
S8



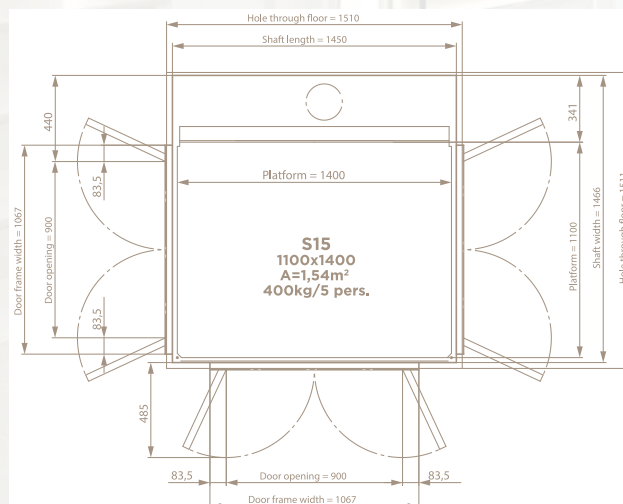
S9



S12



S15



PLEASE CONTACT OUR FRIENDLY SALES TEAM FOR MORE DETAILS

ARITCO HOMELIFT SPECIFICATIONS



1300 122 868



sales@axislifts.com.au

COLOUR YOUR LIFE

By making some of your own choices for your lift, it will fit perfectly into your interior or turn it into a spectacular piece of furniture. We know that every home looks different and understand that you want to design your lift so that it matches all parts of your home.

You can easily see how your lift will look when using our "build your lift" at

www.aritcohomelifts.com. Choose where there should be glass walls or covered walls, where the doors will be placed and what colours you desire.

The walls of the lift can be either covered or of clear or tinted glass. The walls, frames and doors can be painted in different colours to fit your personal style.



STANDARD Whole lift painted in standard colour RAL 9016 (traffic white)

OPTIONS Whole lift painted in an optional colour. Walls painted in an optional colour. Doors painted in an optional colour.

ARITCO HOMELIFT SPECIFICATIONS

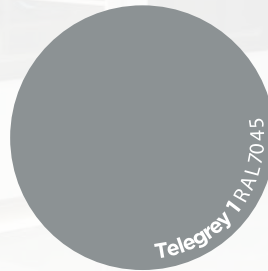
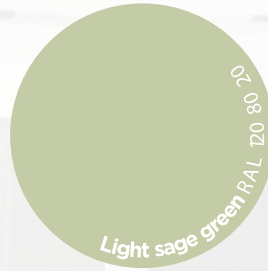
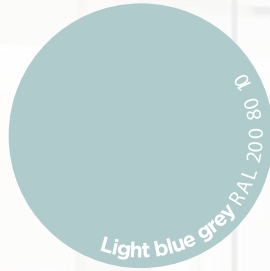
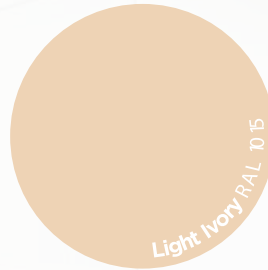
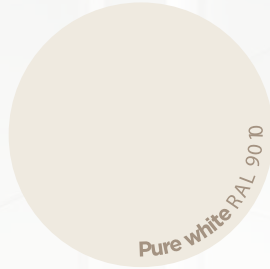
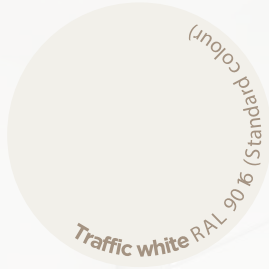


1300 122 868



sales@axislifts.com.au

COLOUR OPTIONS



ARITCO HOMELIFT SPECIFICATIONS



1300 122 868



sales@axislifts.com.au

DESIGN WALL

The DesignWall in the lift has a luxurious and unique design. It is, by itself, a piece of art. The standard model is a backlit white wall of acrylic glass. By choosing one of our carefully selected designs, you are able to really make a statement and express your own personality. Our designs are picked from some prominent Scandinavian designers and artists. The options evolve over time, so please visit www.aritcohomelifts.com latest updates.



ARITCO HOMELIFT SPECIFICATIONS



1300 122 868



sales@axislifts.com.au

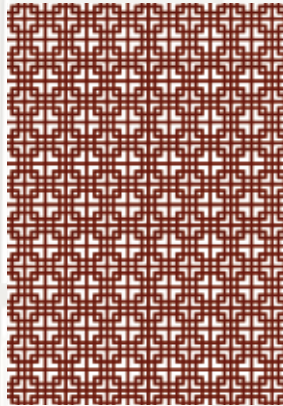
DESIGN WALL

A piece of new art

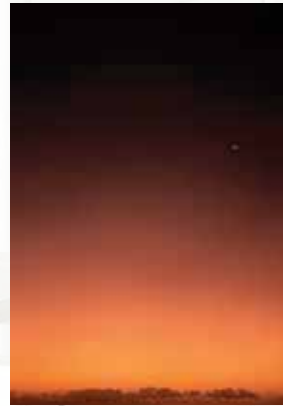
In addition to the standard white DesignWall the following different patterns and pictures are available as an option.



Diagonal
by Alexander Lervik



Orientalic
by Alexander Lervik



Key West
by Erik Undéhn



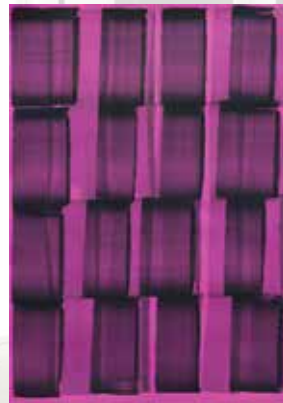
Skyline
by Erik Undéhn



Sheets
by Rikard Lilja



Structure
by Rikard Lilja



Pink
by Lotta Ingman



Orange
by Lotta Ingman